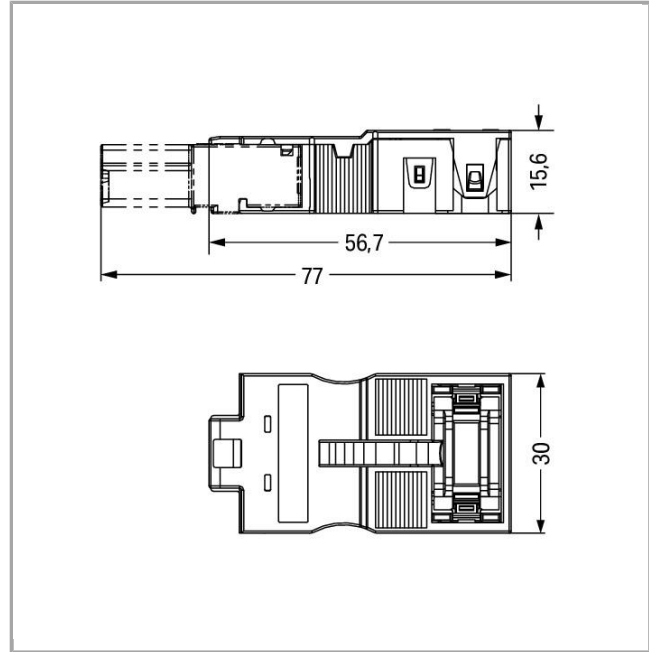
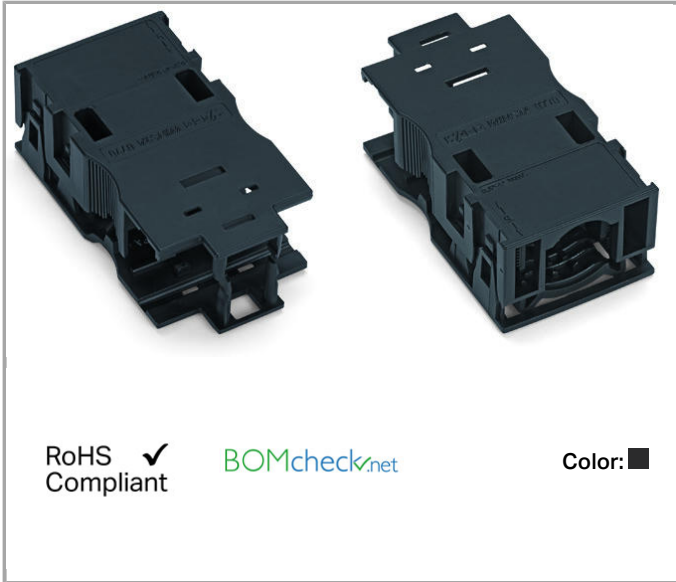


Data sheet | Item number: 770-503/035-000

Strain relief housing; 3-pole; with locking clip; for 1 cable; 7.0 ... 11.5 mm; 48 mm



770-503/035-000



Data

Electrical data

Note on Contact Resistance

approx. 1m Ω contact resistance

approx. 0.25m Ω contact transition plug/socket

Connection data

No. of poles	3
Connectable sheathed cable diameter	7 ... 11.5 mm
Strip length	48 mm

Geometrical Data

Width	30 mm / 1.181 inch
Height	15.6 mm / 0.614 inch
Depth	56.7 mm / 2.232 inch

Mechanical data

Protection class	IP20
Note on protection class	Only in mated condition with strain relief housing (These compact connectors are not designed for use in open, easily accessible areas.)

Plug connection

Mismating protection	Yes
Locking of plug-in connection	locking lever

Material Data

Color	black
Insulating material	Polyamide 66 (PA 66)
Flammability class per UL94	V0
Contact material	Copper or copper alloy, surface-treated
Fire load	0.246 MJ
Weight	8.18 g

Environmental Requirements


Surrounding air (operating) temperature	-35 ... 85 °C
Processing temperature	-5 ... +40 °C
Continuous operating temperature	-35 ... +85 °C
Note on Continuous Service Temperature	Insulating parts for temperatures \leq 105 °C

Commercial data

Country of origin	DE
GTIN	4050821524557
Customs Tariff No.	85389099990

Approvals / Certificates


Ship Approvals

Logo	Approval	Additional Approval Text	Certificate name
	LR Lloyds Register	IEC 61984	02/20050 (E6)

UL-Approvals

Certificate



Logo	Approval	Additional Approval Text	name
	cURus Underwriters Laboratories Inc.	UL 1977	E45171 Sec. 9

Compatible products

Marking accessories

Item no.:	Description	Item no.
210-333	Marking strips; as a DIN A4 sheet; Strip width 6 mm; Strip length 182 mm; plain; Self-adhesive	210-333

Downloads

Documentation

Bid Text

Item no.	File Name	Size	Action
770-503/035-000	doc	24.6 kB	Download

CAD/CAE - Smart Data

CAD data

Item no.	File Name	Action
770-503/035-000	URL	Download

Subject to changes.